



VACUUM CLEANERS - WET & DRY - PREMIUM



GP 1/27 W&D GS 1/33 W&D

POWER MAX

1200
W

WATER LIFT

2470
mmH2O

AIRFLOW

210
m³/h

TANK CAPACITY

27 l
33 l

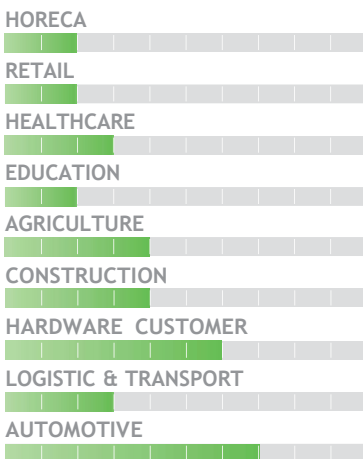
EXCLUSIVE FEATURES

- ▶ AP TUBE
- ▶ SANIFILTER
- ▶ INNOVATIVE GASKET
- ▶ STRONG HOOKS
- ▶ SCREWING CONNECTION
- ▶ SEALANT FLOATER & INTEGRATED ANTI-FOAM SYSTEM
- ▶ RELIABLE CONSTRUCTION FOR INTENSIVE USE
- ▶ DOUBLE STAGE POWERFUL MOTOR



MICROFIBER BAG INCLUDED

MOST FREQUENTLY USE



INNOVATIONS



BLACK IS GREEN™



HIGHEST PERFORMANCE DOUBLE STAGE MOTORS



NEW BLEND FLEXIBLE HOSE

SPECS



EXTREMELY FLEXIBLE HOOKS



CABLE HOOK



FLEXIBLE HOSE IS LOCKED SECURELY AND RELIABLY

TECHNICAL DATA

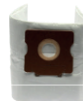
		GP 1/27 W&D ASDO15015	GS 1/33 W&D ASDO15036
Code			
PERFORMANCE			
Usage		WET&DRY	WET&DRY
Motor		1x 2-stage	1x 2-stage
Power	W	1000 -1200 max	1000 -1200 max
Voltage	V	220 - 240	220 - 240
Water lift	mmH ₂ O	2470	2470
Airflow	m ³ /h	210	210
Tank Capacity/Material	l	27/plastic	33/steel
Cable length	m	8.5	8.5
Sound Pressure Level (EN 60704-1; EN 60704-2-1; IEC 60335-2-69)	dB(A)	72	72
Diameter of accessories	mm	36	36
Dimensions (LxWxH)	mm	380x380x650	380x380x650
Weight	Kg	10,5	12,0

STANDARD EQUIPMENT

CODE: TBFX01183
EXTRA STRONG FLEXIBLE
HOSE 2 m Ø36 mm



CODE: -
MICROFIBER BAG



CODE: LAFN28238 (FOR 1PC)
ALUMINIUM/PLASTIC
TUBE 50 cm Ø36 mm
(MACHINE COMES WITH 2PCS)



CODE: LAFN85073
HANDLE WITH AIR
REGULATOR Ø36 mm



CODE: SPPV01771
DOUBLE USE BRUSH
Ø36 mm



CODE: SPPV28245
WET FLOOR TOOL
Ø36 mm



CODE: SPPV28242
FLAT LANCE Ø36 mm



CODE: SPPV28243
ROUND BRUSH Ø36 mm



CODE: MPVR00141
SMALL TOOL Ø36 mm



CODE: KTRI02943
DRY FILTERING KIT



OPTIONAL ACCESSORIES

CODE: KTRI03035
PAPER BAG SET OF 10 PCS



X10

CODE: KTRI04795
MICROFIBER BAG SET OF
10 PCS



X10

CODE: FTDP00222
PREFILTER PCB



CODE: FTDP00654
WASHABLE CARTRIDGE
KIT W/RING AND GASKET



CODE: FTDP00657
HEPA CARTRIDGE KIT W/
RING AND GASKET



CODE: MPVR28723
FASTENING PLASTIC RING



CODE: FTDP44260
WASHABLE POLYESTER
CARTRIDGE (AVAILABLE
AS SPARE PART) 3.000 cm²



CODE: FTDP28844
HEPA H13 CARTRIDGE
(AVAILABLE AS SPARE PART)
3.000 cm²



CODE: FTDP28755
MESH FILTER



CODE: KTRI03005
FILTERING KIT SUITABLE
FOR CARTRIDGE



CODE: KTRI06273
3D WET FILTERING KIT FOR
MIXTURES



CODE: MPVR11566
CREVICE TOOL 35 cm
Ø36 mm



CODE: MPVR11567
FLEXIBLE CREVICE TOOL
60 cm Ø36 mm



CODE: KTRI02734
CONDUCTIVE TOOL KIT
Ø36 mm
(FOR STEEL TANK MODEL)

