



IPC

BY TENNANT COMPANY

VACUUM CLEANERS - WET & DRY - PREMIUM



GP 3/72 W&D GS 3/78 W&D GS 3/78 W&D DFS HEPA

POWER MAX

3300

W

WATER LIFT

2470

mmH2O

AIRFLOW

630

m³/h

TANK CAPACITY

72,78

l

EXCLUSIVE FEATURES

- ▶ AP TUBE
- ▶ SANIFILTER
- ▶ INNOVATIVE GASKET
- ▶ STRONG HOOKS
- ▶ INDEPENDENT MOTORS WITH LIGHT SWITCHES
- ▶ SEALANT FLOATER & INTEGRATED ANTIFOAM SYSTEM
- ▶ TIPPING TROLLEY
- ▶ RELIABLE CONSTRUCTION FOR INTENSIVE USE
- ▶ DETACHABLE TANK AND SOLID CART
- ▶ DOUBLE STAGE POWERFUL MOTORS
- ▶ DFS HEPA H14 SYSTEM FOR SIMULTANEOUS WET AND DRY PICK UP



MICROFIBER BAG INCLUDED

MOST FREQUENTLY USE

AGRICULTURE



CONSTRUCTION



HARDWARE CUSTOMER



HEAVY INDUSTRY



LOGISTIC & TRANSPORT



AUTOMOTIVE



INNOVATIONS



BLACK IS GREEN™



HIGHEST PERFORMANCE DOUBLE STAGE MOTORS



NEW BLEND FLEXIBLE HOSE

SPECS



TIPPING TANK



SYSTEM DFS FOR SIMULTANEOUS DRY AND WET PICK UP



OPTIONAL FIXED ACCESSORY

TECHNICAL DATA

| | | GP 3/72 W&D ASDO15029 | GS 3/78 W&D ASDO15044 | GS 3/78 W&D DFS HEPA ASDO15117 |
|--|--------------------|--------------------------|--------------------------|-----------------------------------|
| Code | | | | |
| PERFORMANCE | | | | |
| Usage | | WET&DRY | WET&DRY | WET&DRY |
| Motor | | 3 | 3 | 3 |
| Power | W | 2900 - 3300 max | 2900 - 3300 max | 2900 - 3300 max |
| Voltage | V | 220 - 240 | 220 - 240 | 220 - 240 |
| Water lift | mmH ₂ O | 2470 | 2470 | 2470 |
| Airflow | m ³ /h | 630 | 630 | 630 |
| Tank Capacity/Material | l | 72/plastic | 78/steel | 78/steel |
| Cable length | m | 8.5 | 8.5 | 8.5 |
| Sound Pressure Level (EN 60704-1; EN 60704-2-1; IEC 60335-2-69) | dB(A) | 76 | 76 | 76 |
| Diameter of inlet | mm | 60 | 60 | 60 |
| Diameter of accessories | mm | 38 | 38 | 38 |
| Dimensions (LxWxH) | mm | 550x600x1030 | 550x600x980 | 550x600x980 |
| Weight | Kg | 23,0 | 24,0 | 24,0 |

STANDARD EQUIPMENT

CODE: TBFX01231
EXTRA STRONG FLEXIBLE
HOSE 2,5 m Ø38 mm



CODE: LAFN43048 (FOR 1 PC)
ALUMINIUM/PLASTIC
TUBE 50 cm Ø38 mm
(MACHINE COMES WITH 2PCS)



CODE: MPVR43047
HANDLE WITH AIR
REGULATOR Ø38 mm



CODE: SPPV43050
DUST TOOL Ø38 mm



CODE: SPPV43051
WET TOOL Ø38 mm



CODE: SPPV00156
FLAT LANCE Ø38 mm



CODE: SPPV43052
ROUND BRUSH
Ø38 mm



CODE: MPVR43049
ADAPTER



CODE: FTDP28733
DRY FILTERING KIT
(FOR 72 L MODELS)



CODE: KTRI02949
DRY FILTERING KIT
(FOR 78 L MODELS)



CODE: FTDP00846
HEPA H14 + POLY
CARTRIDGE 2.960 cm²
(ONLY FOR DFS MODEL)



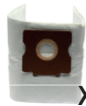
OPTIONAL ACCESSORIES

CODE: KTRI02912
PAPER BAG SET OF 10 PCS



X10

CODE: KTRI04796
MICROFIBER BAG SET OF
10 PCS



X10

CODE: FTDP00223
PREFILTER PCB



CODE: FTDP00654
WASHABLE CARTRIDGE
KIT W/RING AND GASKET



CODE: FTDP00657
HEPA CARTRIDGE KIT W/
RING AND GASKET



CODE: MPVR28723
FASTENING PLASTIC RING



CODE: FTDP44260
WASHABLE POLYESTER
CARTRIDGE (AVAILABLE
AS SPARE PART) 3.000 cm²



CODE: FTDP28844
HEPA H13 CARTRIDGE
(AVAILABLE AS SPARE PART)
3.000 cm²



CODE: FTDP28755
MESH FILTER



CODE: SPPV01336
CARPET BRUSH Ø38 mm



CODE: SPPV28248
FIXED ACCESSORY FOR
LIQUID



CODE: SPPV28247
FIXED ACCESSORY FOR
DUST



CODE: SPPV30894
FIXED ACCESSORY FOR
DUST AND LIQUIDS



CODE: KTRI06274
3D WET FILTERING KIT FOR
MIXTURES (FOR 72 LITERS
TANK)



CODE: KTRI06214
DFS HEPA H14 KIT (FOR 72
LT MODELS)



CODE: KTRI06275
DFS HEPA H14 KIT (FOR 78
LT MODELS)



CODE: KTRI02735
CONDUCTIVE TOOL KIT
Ø38 mm
(FOR STEEL TANK MODEL)



CODE: SPPV37133
BRISTLE BRUSH Ø38 mm

