



VACUUM CLEANERS - WET & DRY - PROFESSIONAL



YP 2/62 W&D YS 2/62 W&D

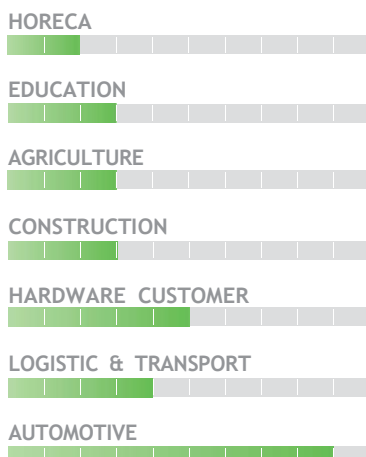
POWER MAX	WATER LIFT	AIRFLOW	TANK CAPACITY
2800 W	2230 mmH2O	510 m ³ /h	62 l



EXCLUSIVE FEATURES

- ▶ AP TUBE
- ▶ SANIFILTER
- ▶ INNOVATIVE GASKET
- ▶ STRONG HOOKS
- ▶ INDEPENDENT MOTORS WITH LIGHT SWITCHES
- ▶ SEALANT FLOATER & INTEGRATED ANTIFOAM SYSTEM
- ▶ RELIABLE CONSTRUCTION FOR INTENSIVE USE

MOST FREQUENTLY USE



INNOVATIONS



SPECS



ANTI-FOAM SYSTEM



TROLLEY WITH HANDLE



LIGHT SWITCHES

TECHNICAL DATA

Code		YP 2/62 W&D ASDO15074	YS 2/62 W&D ASDO15081
PERFORMANCE			
Usage		WET & DRY	WET & DRY
Motor		2x single stage	2x single stage
Power	W	2400 - 2800 max	2400 - 2800 max
Voltage	V	220 - 240	220 - 240
Water lift	mmH ₂ O	2230	2230
Airflow	m ³ /h	510	510
Tank Capacity/Material	l	62/plastic	62/plastic
Cable length	m	8,5	8,5
Sound Pressure Level (EN 60704-1; EN 60704-2-1; IEC 60335-2-69)	dB(A)	74	74
Diameter of inlet	mm	60	60
Diameter of accessories	mm	38	38
Dimensions (LxWxH)	mm	540x480x880	540x480x880
Weight	Kg	21	21

STANDARD EQUIPMENT

CODE: TBFX88583
FLEXIBLE HOSE 2,5 m
Ø38 mm



CODE: LAFN43048 (FOR 1 PC)
ALUMINIUM/PLASTIC
TUBE 50 cm Ø38 mm
(MACHINE COMES WITH 2PCS)



CODE: MPVR43047
HANDLE WITH AIR
REGULATOR Ø38 mm



CODE: SPPV43050
DUST TOOL Ø38 mm



CODE: SPPV43051
WET TOOL Ø38 mm



CODE: SPPV00156
FLAT LANCE Ø38 mm



CODE: SPPV43052
ROUND BRUSH Ø38 mm



CODE: MPVR43049
ADAPTER

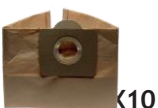


CODE: FTDP28733
DRY FILTERING KIT

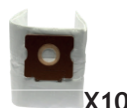


OPTIONAL ACCESSORIES

CODE: KTRI02912
PAPER BAG SET OF 10 PCS



CODE: KTRI04796
MICROFIBER BAG SET
OF 10 PCS



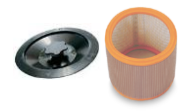
CODE: FTDP00223
PREFILTER PCB



CODE: FTDP00654
WASHABLE CARTRIDGE
KIT W/RING AND GASKET



CODE: FTDP00657
HEPA CARTRIDGE KIT W/
RING AND GASKET



CODE: MPVR28723
FASTENING PLASTIC RING



CODE: FTDP44260
WASHABLE POLYESTER
CARTRIDGE (AVAILABLE
AS SPARE PART) 3.000 cm²



CODE: FTDP28844
HEPA H13 CARTRIDGE
(AVAILABLE AS SPARE PART)
3.000 cm²



CODE: FTDP28755
MESH FILTER



CODE: KTRI06274
3D WET FILTERING KIT FOR
MIXTURES



CODE: KTRI06214
DFS HEPA H14 KIT



CODE: SPPV01336
CARPET BRUSH Ø38 mm



CODE: KTRI02735
CONDUCTIVE TOOL KIT
Ø38 mm
(FOR STEEL TANK MODEL)



CODE: SPPV37133
BRISTLE BRUSH Ø38 mm

