

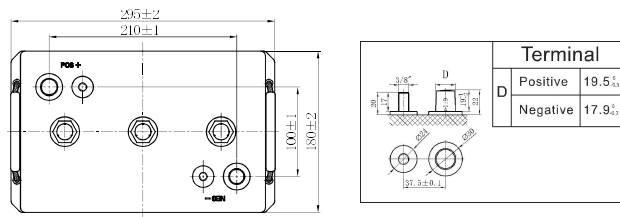
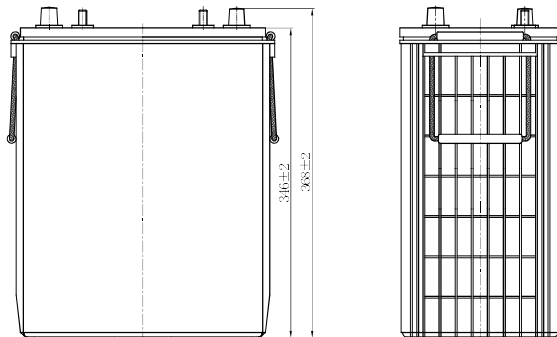
SUPERIOR DEEP CYCLE AGM BATTERY

AMX6-350 (6V350Ah)



CHARACTERISTICS

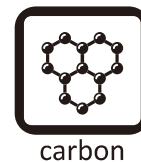
Item	Specifications	
Voltage	6V	
Dimension	Length	295mm (11.6inches)
	Width	180mm (7.09inches)
	Container Height	346mm (13.6inches)
	Total Height	368mm (14.5inches)
Approx Weight	48.2kg (106.3lbs)	
Terminal	DT(3/8")	
Container Material	PP	
Reserve Capacity	25A	820min
	75A	240min
	20HR	350Ah
Capacity	10HR	332Ah
	5HR	305Ah
	Discharge	-20~55°C (-4~131°F)
Operating Temp. Range	Charge	0~40°C (32~104°F)
	Storage	-15~40°C (5~104°F)



Note: Terminal Torque Values in-lb(Nm):176-203(20-23)

APPLICATIONS

- Electric vehicle
- Golf cart
- Sightseeing
- Cleaning equipment
- AWP
- Mobility



Auramax Fzc.

www.aura-max.com

SUPERIOR DEEP CYCLE AGM BATTERY

AMX6-350 (6V350Ah)



GENERAL FEATURES

Stable initial capacity

- PAM/NAM amount optimization
- 4BS crystal paste mixing & curing technology
- Double layer separator technology
- Improved design electrolyte S.G.

Less water loss

- PAM/NAM amount optimization
- New PAM/NAM recipe introduced
- Rare earth alloy

Solve NAM sulphation

- Carbon boost technology
- Pre-sulfate technology

Improved PSoC cycling

- Carbon boost technology
- Mix carbon boost technology
- Targeting for higher level through carbon technology

Delay PAM softening and shedding

- Plate assembly pressure re-engineering
- 4BS crystal paste mixing & curing technology
- Higher paste density

Excellent deep cycle performance

- Plate assembly pressure re-engineering
- New PAM/NAM recipe introduced
- Gel electrolyte technology
- Rare earth alloy
- Double layer separator technology
- Lower acid filling temperature

Optimize electrolyte stratification

- Introduce AGM-GEL technology

